

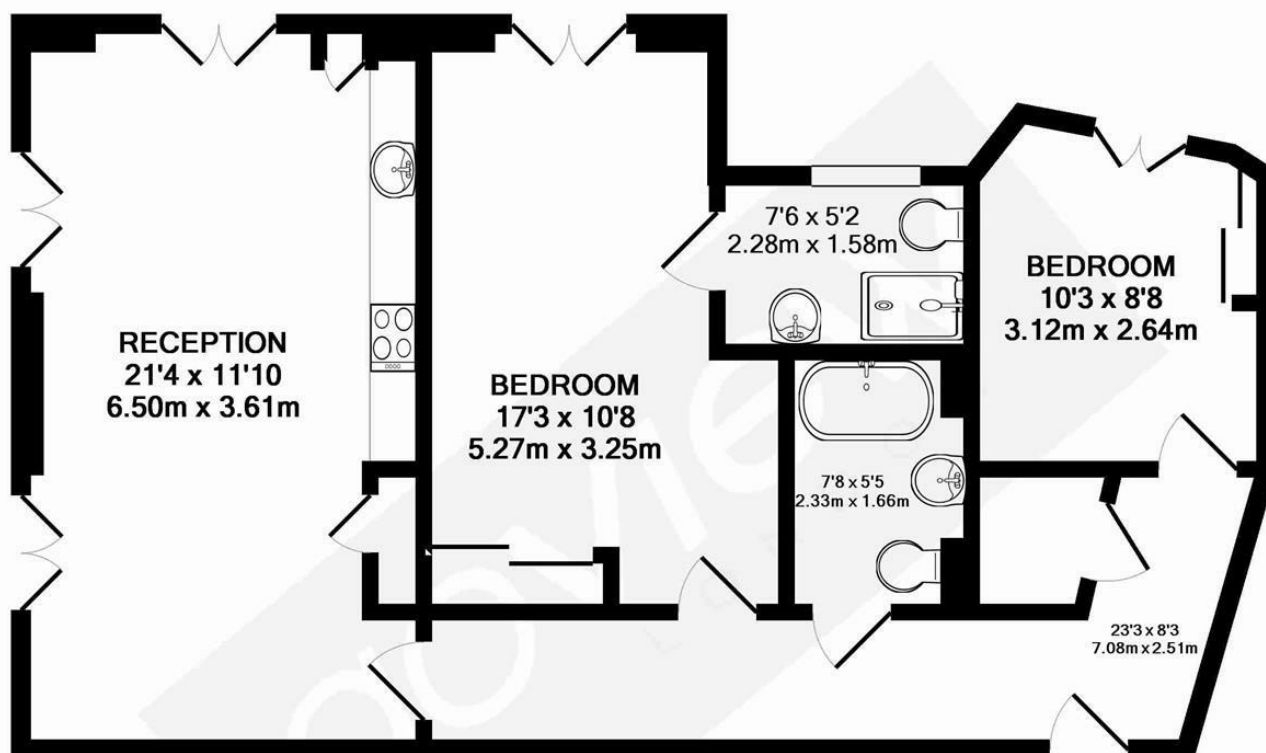


Entwistle Terrace, W6

LONG LET. This immaculate two bedroom flat is beautifully designed and boasts a wonderful secure building benefiting from a idyllic location close to Chiswick High Road.

- TWO BEDROOMS
- TWO STUNNING BATHROOMS
- MODERN KITCHEN
- SPACIOUS RECEPTION
- CLOSE TO TRANSPORT
- UNFURNISHED

£2,699 PCM



TOTAL APPROX. FLOOR AREA 695 SQ.FT. (64.5 SQ.M.)

Whilst every attempt has been made to ensure the accuracy of the floor plan contained here, measurements of doors, windows, rooms and any other items are approximate and no responsibility is taken for any error, omission, or mis-statement. This plan is for illustrative purposes only and should be used as such by any prospective purchaser. The services, systems and appliances shown have not been tested and no guarantee as to their operability or efficiency can be given

Made with Metropix ©2016



Energy Efficiency Rating		
	Current	Potential
Very energy efficient - lower running costs		
(92 plus) A		
(81-91) B	84	84
(69-80) C		
(55-68) D		
(39-54) E		
(21-38) F		
(1-20) G		
Not energy efficient - higher running costs		
England & Wales		
	EU Directive 2002/91/EC	